

# Nearer, Dear Savior to Thee

SAB and Piano

Text: Joseph L. Townsend

Music: William Clayton

arr. Andrew Hawryluk

With great yearning, not rushed

8

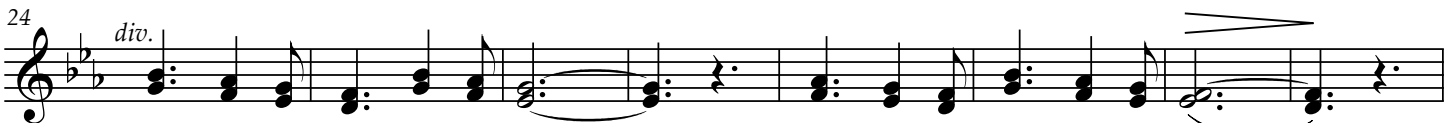
Women:



Near - er, dear Sav - ior, to thee, \_\_\_\_\_ Near - er, near - er to



thee \_\_\_\_\_ Ev - er I'm striv - ing to be Near - er, yet near - er to thee! \_\_\_\_\_



Trust - ing, in thee I con - fide; \_\_\_\_\_ Hop - ing, in thee I a - bide. \_\_\_\_\_



Take, oh, — take, — and cher - ish me, Near - er, dear Sav - ior, to



thee. Near - er, dear Sav - ior to thee, near - er to thee Ev - er my

*mp* Near - er, near - er to thee Ev - er my



an - them will be Near - er, yet near - er to thee! \_\_\_\_\_ Hum - bly I come to thee

an - them will be Near - er, yet near - er to thee! \_\_\_\_\_ Hum - bly I come to thee

Nearer, Dear Savior to Thee

2

53

now; Earn - est, I prayer - ful - ly bow. oh, take, and

now; Earn - est, I prayer - ful - ly bow. Take, oh, take, and

61

cher - ish\* me, Near - er, dear Sav - ior, to thee. Lov - ing thee, ev - er I

cher - ish me, Near - er, dear Sav - ior, to thee. Lov - ing thee, ev - er I

69

pray, Aid me thy will to o - bey. Near - er, dear

pray, Aid me thy will to o - bey. Near - er, dear

76

Sav - ior, to thee, Near - er, near - er to thee Let me by

Sav - ior, to thee, Near - er, near - er to thee Let me by

84

When all my tri - als are

ho - li - ness be Near - er, yet near - er to thee!

When all my tri - als are

ho - li - ness be Near - er, yet near - er to thee!

\* If the F# is too low, altos may stay on the B.

Nearer, Dear Savior to Thee

92

done, — When my re - ward I have won, — *poco rit.* Take,\* oh, —

*ff*

This system contains measures 92 through 98. It features a vocal line with lyrics and a piano accompaniment. The key signature is three sharps (F#, C#, G#). The music includes a crescendo leading to a fortissimo (*ff*) dynamic. The tempo marking *poco rit.* is present. The lyrics are: "done, — When my re - ward I have won, — *poco rit.* Take,\* oh, —".

99

take, — and cher - ish me, — Near - er, dear Sav - ior, to thee, —

*mp*

This system contains measures 99 through 104. It continues the vocal line and piano accompaniment. The dynamics are marked *mp*. The lyrics are: "take, — and cher - ish me, — Near - er, dear Sav - ior, to thee, —".

105

— to thee, — to thee.

*p* *pp*

This system contains measures 105 through 111. It concludes the vocal line and piano accompaniment. The dynamics are marked *p* and *pp*. The lyrics are: "— to thee, — to thee.". The system ends with a double bar line.

\* Optional tenor part measures 98–105